



# UNIVERSITY OF WESTMINSTER

## A GLOBAL UNIVERSITY WITH LONDON ENERGY

### STUDY ABROAD FACTSHEET

2025/2026



# STUDYING WITH US

From business and finance to fashion, art, music, cinema and sport, London is where things happen! Studying at Westminster means that student experience goes well beyond the walls of the university and everything that London has to offer is on students' doorstep. London really will be their campus!

We have three campuses in the heart of London and one in the leafy borough of Harrow in North West London. Our excellent facilities include:

- 24-hour libraries
- State-of-the-art science laboratories
- Advanced IT services
- Online learning resources
- Art, design, film and TV studios
- World-class audio recording studios
- Galleries
- Sports and recreational facilities
- One of the few Bloomberg Financial Markets Suites in the UK
- Specialist workshops for wood, metal, moulding, casting, photography and ceramics
- A new cutting-edge digital Fabrication Laboratory that offers a suite of 3D printers and laser cutters



Support available to students:

- Detailed pre-arrival information and support and a comprehensive welcome session upon arrival
- Academic colleagues who will provide support whilst your students study with us
- Personal tutor
- Access to counselling and mental health services, disability learning support, student wellbeing and visa and immigration advice

With students from 169 nations, we have one of the most diverse student communities in the UK.

# OUR PRIORITIES



“Wellbeing, inclusion and sustainable development are our priorities and guide us in all we do”

## WELLBEING

We believe that everyone has the right to feel fulfilled at work and study, connected to a community of colleagues and students who are passionate about making a positive impact on themselves, our workplaces, study spaces and those around us.

## INCLUSION

Westminster promotes a supportive and safe learning and working environment which is equitable, diverse and inclusive, is based on mutual respect and trust, and is a place where harassment and discrimination are not tolerated. As a responsible institution, we strive to ensure and to champion equality. As a progressive institution, we take pride in our diversity. As a compassionate institution, we commit to an inclusive culture that allows students and colleagues to reach their full potential.

## SUSTAINABLE DEVELOPMENT

We take inspiration from the 17 United Nations' Sustainable Development Goals (SDGs) in how we drive our actions, activities and governance across the University, in line with our progressive, responsible and compassionate values.



**SUSTAINABLE DEVELOPMENT GOALS**

# OUR CAMPUSES



Students can access the services across all of our campuses



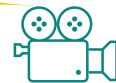
[Click here to watch a short video of Regent Street campus](#)



## HARROW



- Photography
- Digital Media
- Television & Film
- Media
- Journalism
- Art



[Click here to watch a short video of Harrow campus](#)



## REGENT STREET



- Politics & International Relations
- Cultural Studies
- Criminology
- English
- History
- Linguistics
- Modern Languages & Cultures
- Sociology
- Law



# OUR CAMPUSES



## CAVENDISH

- Computer Sciences
- Biomedical Sciences
- Life Sciences
- Psychology



Click here to watch a short **video** of **Cavendish campus**



Click here to watch a short **video** of **Marylebone campus**



You can [find out more about all our campuses here](#)



## MARYLEBONE

- Architecture
- Economics
- Finance
- Accounting
- Business Information Management
- Marketing & Tourism
- Human Resources

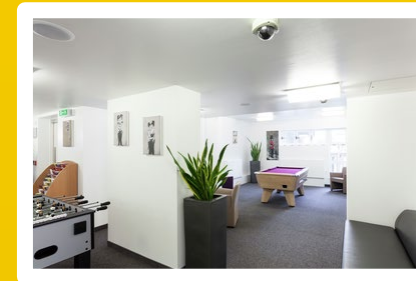


# ACCOMMODATION



## University Halls of Residence

- Students can apply for housing in one of our two Halls of Residence – Alexander Fleming and Harrow Hall
- All rooms are single rooms
- Harrow Hall offers *en-suite* bathrooms
- Housing is self-catered with shared kitchens
- 24h reception and security
- Close to tube stations
- Available but is not guaranteed
- [University accommodation \(including prices\) can be found here](#)



## Private Rented Accommodation

- Many students choose to live in privately rented accommodation
- Support and advice is provided by our Student Accommodation Team to students who have applied for University Halls of Residence and who have been unsuccessful
- More information on [private rented accommodation can be found here](#)



# MODULES

## Which modules can I choose?

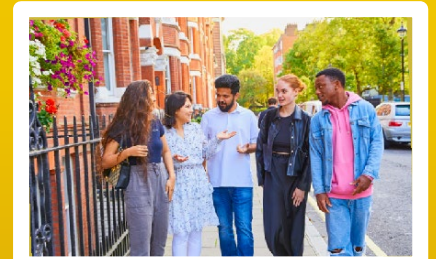
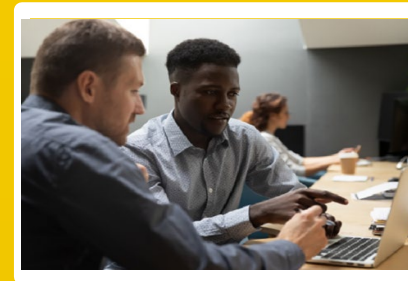
- Students can choose their modules from our [Study Abroad Module Catalogues](#)
- It is possible to select modules from different Schools/various study fields
- A portfolio of work will likely be required for practical Arts, Media Communication and Architecture modules
- We offer a set of exciting London focused modules!

WORKLOAD	WESTMINSTER CREDITS
Academic year	120 credits (6 modules) OR 160 credits (8 modules)
One semester	60 credits (3 modules) OR 80 credits (4 modules)
One module	20 credits

# INTERNSHIP PROGRAMME

## Quick facts

- Students can apply for a study abroad internship as part of a single semester or year-long study abroad programme at the University of Westminster, **but the maximum duration of the internship is one semester**
- Internships are **part-time and run for 12 weeks**, until the end of the teaching period
- Alongside academic studies, students will be expected to **work 14 hours** over two to three days per week in their internship
- All internship students must take the compulsory **Professional and Personal Skills Development module**
- All internship students must obtain their [Student Visa](#)



# ENTRY REQUIREMENTS

## ACADEMIC

### Undergraduate

- Cumulative GPA of 2.7 on a 4.0 scale
- Countries with a different grading system: average of a C grade, or good, or equivalent.

### Postgraduate

- Cumulative GPA of 2.7 on a 4.0 grading scale
- B or C or equivalent, depending on the study field and applicant's home university's grading system

 You will need to submit an academic transcript as part of your application



## PROOF OF ENGLISH

*Language of Instruction at the University of Westminster is English*

- **At Undergraduate level**, an overall score of **IELTS 6.0 (or equivalent)** is required, with a minimum of 5.5 in each element. Some modules have higher English language requirements, such as many Arts, Media and Communication modules. Please refer to the [module catalogues](#) where any higher English language requirements will be specified
- The general entry requirement for **Postgraduate modules** is **IELTS 6.5**. Some modules might require higher test results.
- Students who have been nominated by our Study Abroad partner universities are able to provide evidence of English language ability in the form of a **formal letter** of reference from their Home University, outlining their language ability.
- ~~Students who are not able to provide a formal letter of reference from their home university, proof of English must be in the form of a recent test (usually from within the last 2 years). Some tests that we accept are: IELTS Academic, IELTS for UKVI, Pearson, TOEFL (iBT), Duolingo and Cambridge Assessment English (B2 First, (FCE), C1 Advanced CAE or C2 Proficiency CPE).~~ [A list of additional tests can be found here](#)
- Please note, we are not able to accept scores from across more than one test.



# VISA INFORMATION

## Will I need a visa?

Students who will be studying with us for **less than six months** and are not taking our internship programme, will require a [Standard Visitor visa](#). Certain nationals must apply in advance.

Students who will be studying with us for **more than six months** or if they are taking our **internship** programme, will require a [Student visa](#).

Our team will contact these students to start the process of requesting their CAS shortly after acceptance letters have been sent out.

[Use the UK Government online visa check](#) to see whether you will need a visa.

Full, tailored information and guidance will be sent to applicants following acceptance onto the programme.

## ETA

The UK Government has recently rolled out a new [Electronic Travel Authorisation](#) (ETA).

The ETA is a permission to travel for those who do not need to obtain a visa or do not have an immigration status.

It will apply to all non-visa nationals seeking to come to the UK as visitors for up to 6 months (who haven't had to apply for a Standard Visitor visa in advance).

**We will provide all accepted students with detailed guidance on visas and the ETA.** After acceptance, students will also be able to contact our specialised Student Advice team who are trained in visa and immigration matters.

# STUDENT SUPPORT

## WELLBEING

We believe that everyone has the right to feel fulfilled at work and study, connected to a community of colleagues and students who are passionate about making a positive impact on themselves, our workplaces, study spaces and those around us.

## INCLUSION

Westminster promotes a supportive and safe learning and working environment which is equitable, diverse and inclusive, is based on mutual respect and trust, and is a place where harassment and discrimination are not tolerated. As a **responsible** institution, we strive to ensure and to champion equality. As a **progressive** institution, we take pride in our diversity. As a **compassionate** institution, we commit to an inclusive culture that allows students and colleagues to reach their full potential.

## Support for Study Abroad students includes:

- Detailed pre-arrival information and support - including an online Q&A session with our team plus Pre-Arrival Information series
- Comprehensive welcome session upon arrival
- Organised welcome social events
- Assigned Personal Tutor
- Access to the University's extensive support services, which cover [counselling and mental health](#) services, [disability learning support](#), [student wellbeing](#), [academic skills](#) and [visa and immigration](#) advice
- All students have completely free access to the University's [gym facilities](#), including sports clubs and societies
- Free breakfast and hearty £3 hot lunch deals during the week
- Weekly optional drop-in sessions with the Education Abroad Team
- Free access to [University of Westminster Students' Union](#)
- [Student Centre live chat](#) for enquiries operates 6 days per week
- Dedicated prayer and contemplation facilities located across our campus sites
- Access to libraries and facilities including laptop borrowing

# USEFUL INFORMATION

## University of Westminster Student Union

From club nights to sports, networking and socials - there are plenty of events to get involved in. UWSU also offer advice and guidance on academic and pastoral matters



All students have completely **FREE** access to amazing **gym facilities**, **sports clubs** and **societies**

Follow them at:

 [@westminstersu](https://www.instagram.com/westminstersu)

## Life in London

Cultural London - [read more about London as a place of culture and learning](#)



## Insurance

We strongly advise that students obtain adequate insurance to cover accident, theft, travel, medical needs etc., before coming to the UK. We cover this topic in their acceptance information and pre-arrival.



## Cost of living

Like all capital cities, London can be an expensive place to live. Our advice is to be prepared and take time to budget in advance. On average, students can spend around £475 per week on **rent and living costs** in London. There are many discounts available to students which we will share, plus additional saving tips, in our extensive pre-arrival material



## Grade release

Semester 1 students: late February  
Semester 2 and Full Year students: late June

## Transcripts

Students will have access to secure, validated electronic transcripts. For students who do not hold any referrals/deferrals, transcripts are usually first released via the [University of Westminster Verification Service Portal](#) approximately 10 days after the grade release date



## University of Westminster Academic dates for Study Abroad





# SOCIAL MEDIA

Follow Westminster at:



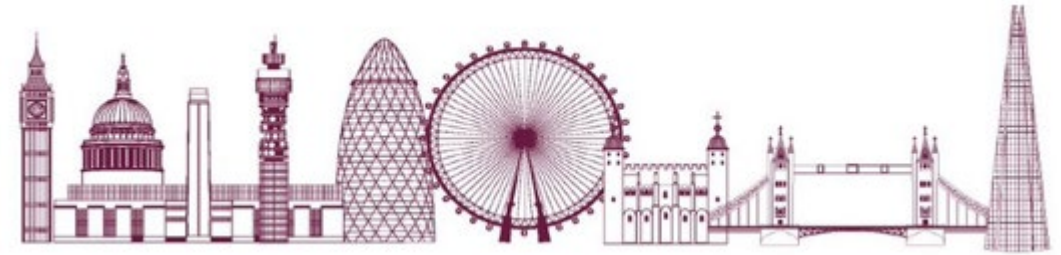
[\*\*@uw\\_eduabroad\*\*](https://www.instagram.com/uw_eduabroad)

Our page for Study Abroad students

[\*\*@uniwestminster\*\*](https://www.instagram.com/uniwestminster)

Westminster's main account

# APPLICATION



## APPLICATION DEADLINES

**1 May** – for September start date

**15 October** – for January Start date



## REQUIRED DOCUMENTS/INFORMATION

- Academic transcript (showing all years of study and grade average)
- Copy of passport (main photo page)
- Proof of English language ability (if required)
- Portfolio of work (if required)
- Module selection
- Housing selection (if relevant)
- Disability indication (if relevant)

## DETAILED PROGRAMME INFORMATION:



---

# UNIVERSITY OF WESTMINSTER

**Education Abroad Team**  
Global Mobility Centre  
115 New Cavendish Street  
London, W1W 6UW  
United Kingdom



+44 (0)20 7911 5166



educationabroad@westminster.ac.uk



@uw\_eduabroad

